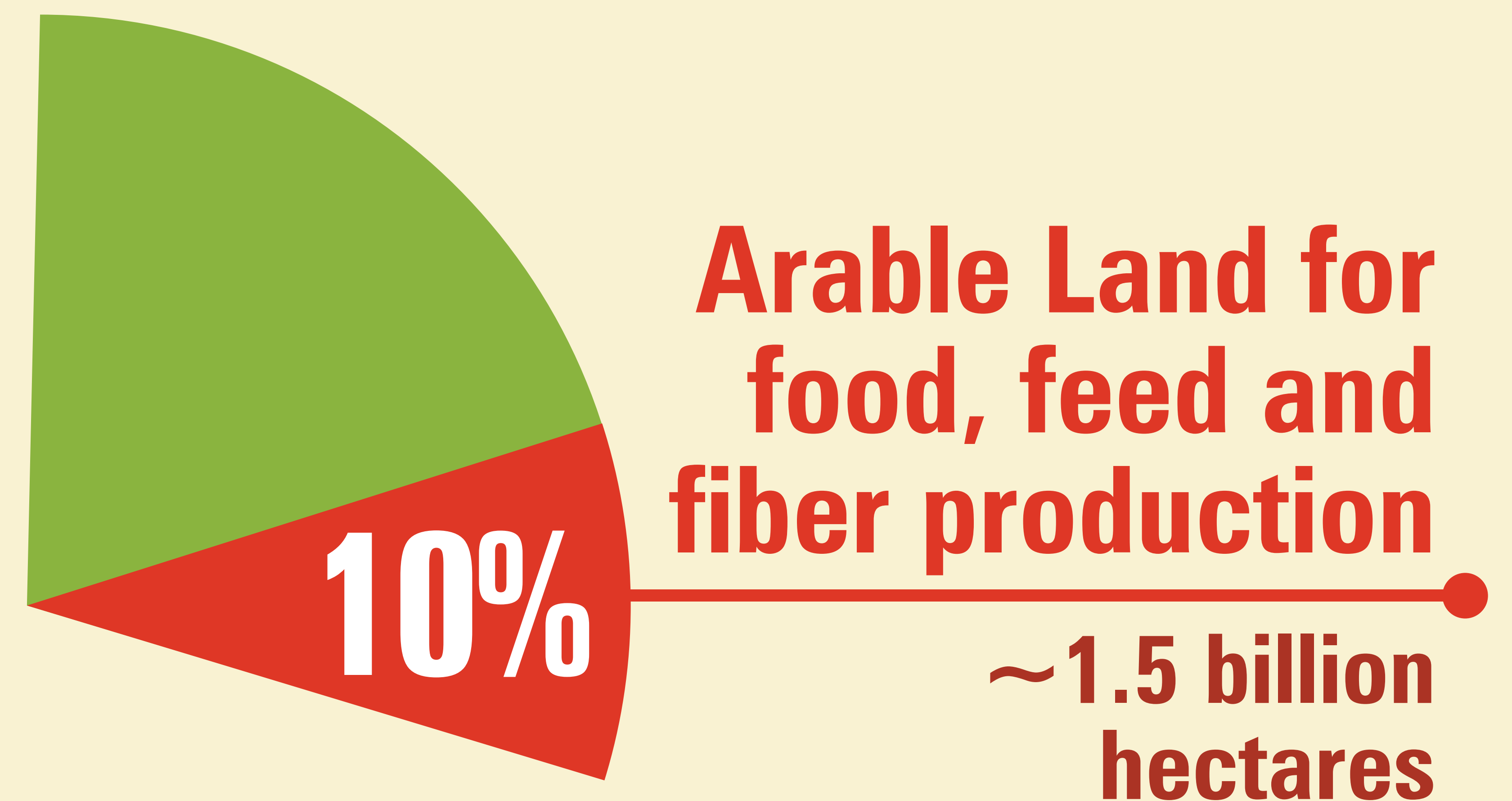
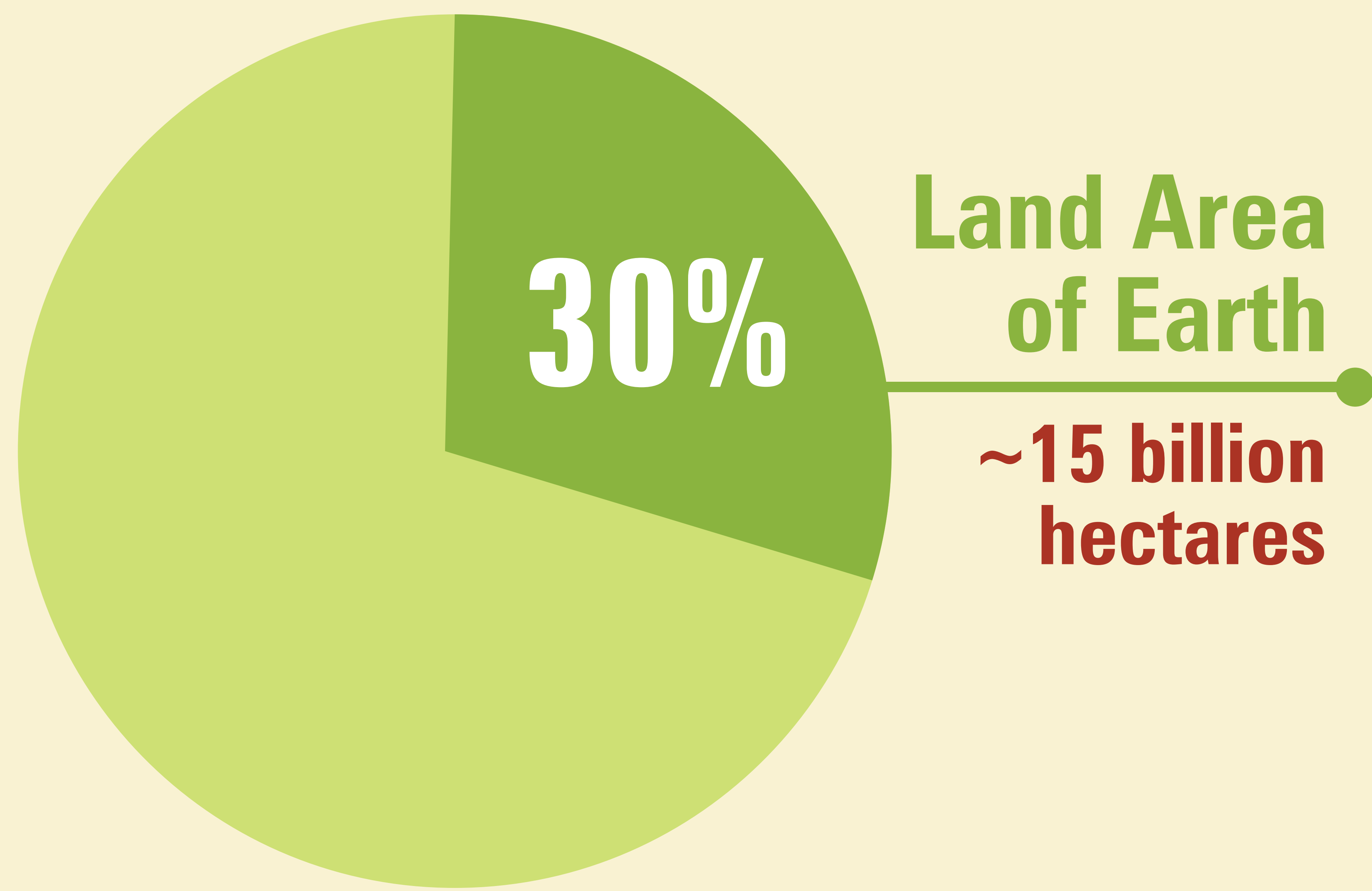


Can Mother Earth Feed 9+ Billion by 2050?

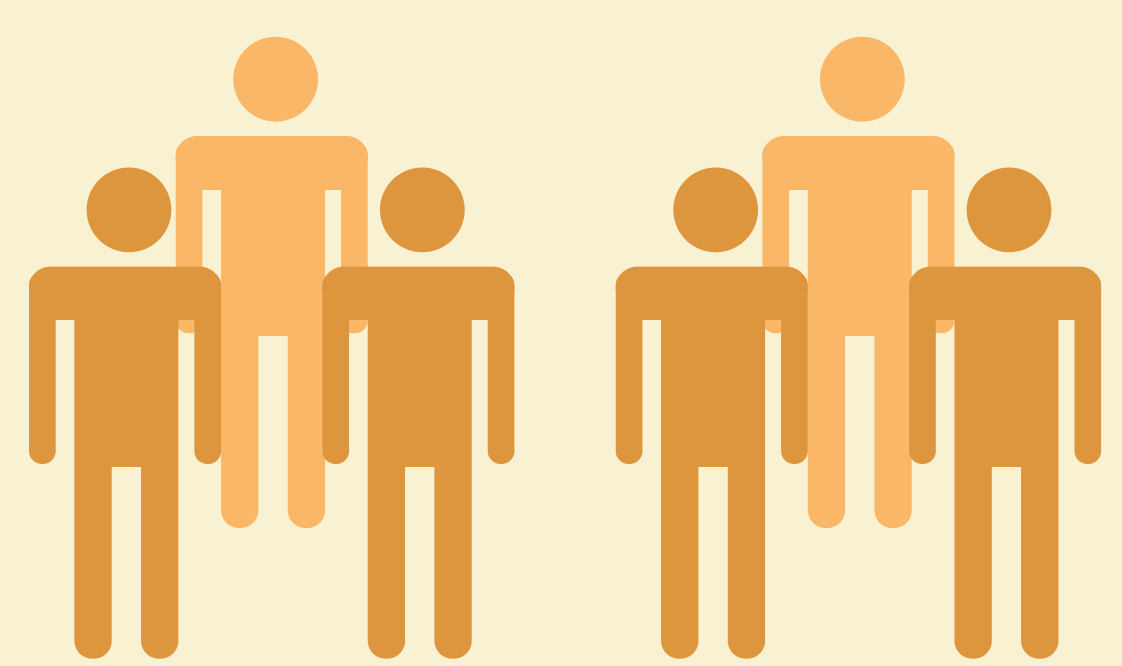


ARABLE LAND PER PERSON IN 2010

~ 0.2 hectare, equivalent to a plot of land 45m x 45m in 2010 compared to a required minimum area of 0.5 hectare per person

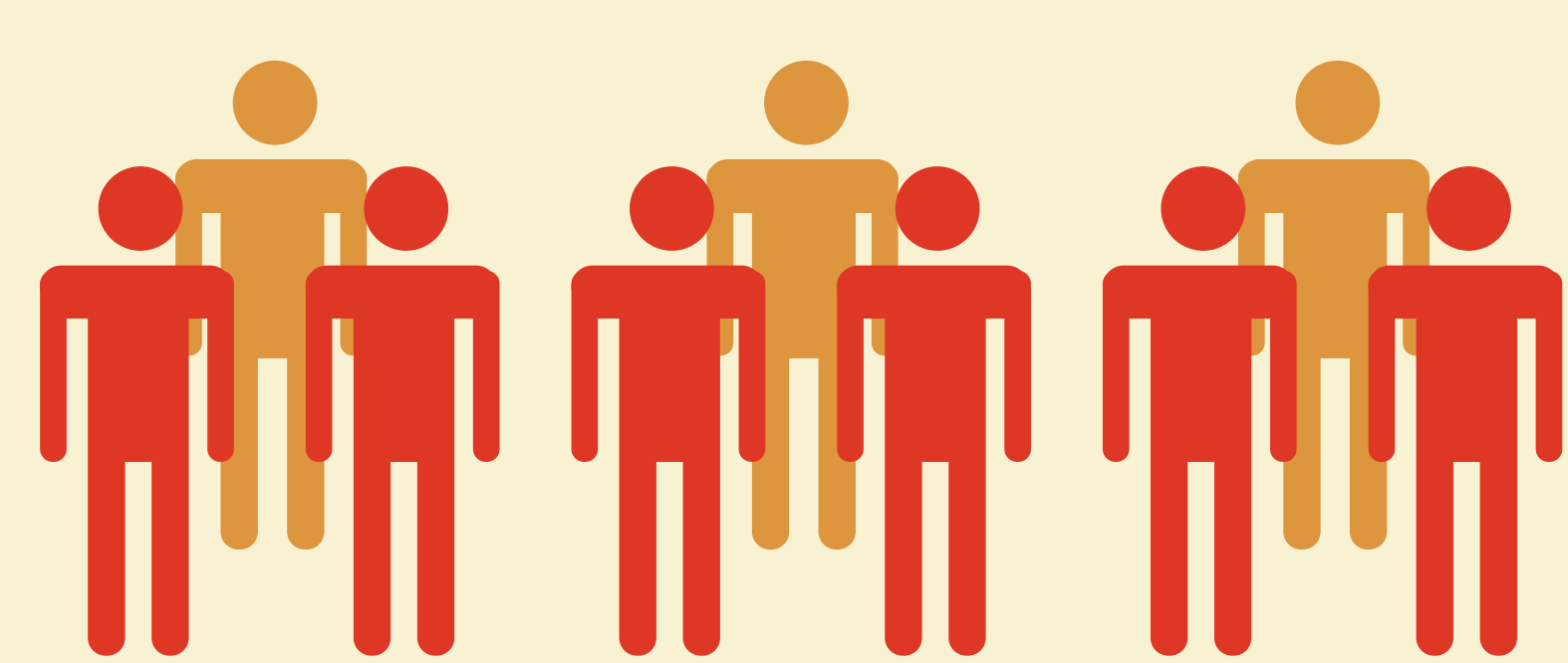


2012



7+ BILLION

2050



9+ BILLION

2100



10+ BILLION

Growing Population

Number of people to be fed

Can we produce sufficient food from 0.2 hectare?

Food security is a formidable challenge

The citizens of the world must work together for a hunger-free and more peaceful world using the best conventional crop technology and the best of biotechnology in a policy framework conducive to crop production.

For more information, please visit - www.isaaa.org